

© 2008 General Electric Company - All rights reserved.
GE Healthcare, a division of General Electric Company.

General Electric Company reserves the right to make changes in specifications and features shown herein, or discontinue the product described at any time without notice or obligation.
Contact your GE representative for the most current information.

GE, GE Monogram, LOGIQ are trademarks of General Electric Company.

Healthcare Re-imagined

GE is dedicated to helping you transform healthcare by driving critical breakthroughs in biology and technology. Our expertise in medical imaging and information technologies, medical diagnostics, patient monitoring systems, drug discovery, and biopharmaceutical manufacturing technologies is enabling healthcare professionals around the world to discover new ways to predict, diagnose and treat disease earlier. We call this model of care "Early Health." The goal: to help clinicians detect disease earlier, access more information and intervene earlier with more targeted treatments, so they can help their patients live their lives to the fullest. Re-think, Re-discover, Re-invent, Re-imagine.

GE Healthcare
9900, Innovation Drive,
Wauwatosa, WI 53226
U.S.A

www.gehealthcare.com



Europe

GE Ultraschall
Deutschland GmbH &
Co. KG
Beethovenstr. 239
D - 42655 Solingen
T (+49) 212 2802 0
F (+49) 212 2802 28

Asia

GE Healthcare
Clinical Systems Asia
3/F, GE China
Technology Park,
1 Hua Tuo Road,
Shanghai 201203,
China
T 86 21 3876 4136
F 86 21 3877 7498

GE Healthcare

The logical first choice LOGIQ C2

my first LOGIQ



Smarter way of caring...

Healthcare today is enhanced with the significant advances in medical technology. And you, as a dedicated healthcare provider, seek to utilize these advances for your patient's benefit.

The LOGIQ C2 is a dependable black & white ultrasound system that enhances quality of diagnosis without stretching budgets. Designed as a stepping stone into the world of ultrasound it is the ideal choice for clinical practices.

Proven Technology, Confident Diagnosis

The LOGIQ C2 draws on GE's leading position in ultrasound technology and is built around its advanced TruScan Architecture providing diagnostic capability you can count on.

- SmartScan for superior diagnostic consistency and confidence through improved image acquisition, reducing the time needed with each patient
- TruAccess that enables live scanning techniques to be applied to stored image data, an exclusive GE raw data processing technology that enhances diagnostic capability
- ComfortScan that aids ease-of-use and operator comfort due to ergonomic design



Enhance your care with innovative features

The LOGIQ C2 is light weight has a small footprint and is easy to move. It is truly big on features

- Auto Optimization
- Tissue Harmonic Imaging
- Virtual Convex
- Auto depth

The system also allows the option of adding features such as LogiView and Easy3D as upgrades.

Ease of operation that lets you do more

The ergonomic design of the LOGIQ C2 makes it easy to use, enabling you to see more patients.

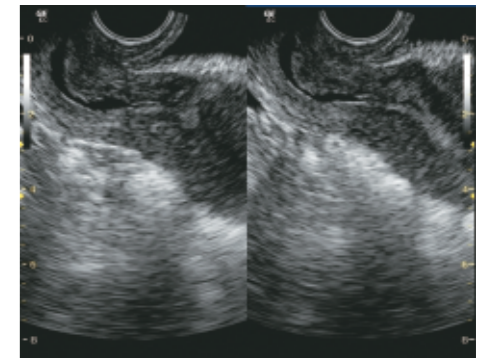
Discover what gives it the potential for high productivity

- Ergonomic hard key operations with backlit keys
- Wide-view 15" High resolution LCD with tilt and fold capability for easy viewing & safe system movement
- Quick saving of image data to memory stick for storage and archiving
- User-programmable presets for quicker system setup
- User-defined keys for greater operating convenience
- Optional DICOM connectivity

The LOGIQ "C" series of Ultrasound systems are the results of GE's deep understanding of the needs of patients and healthcare providers. The "C" represents the Care that you display for patients and the Consistency you can expect in diagnostic support. Both delivered in full!



B mode image of Liver seen on 4C-RC probe with Tissue Harmonic Imaging



B mode image of Cervix, seen with E7C probe with Tissue Harmonic Imaging



Image showing 12 weeks 2 days old fetus, using 4C-RC probe and Tissue Harmonic Imaging